



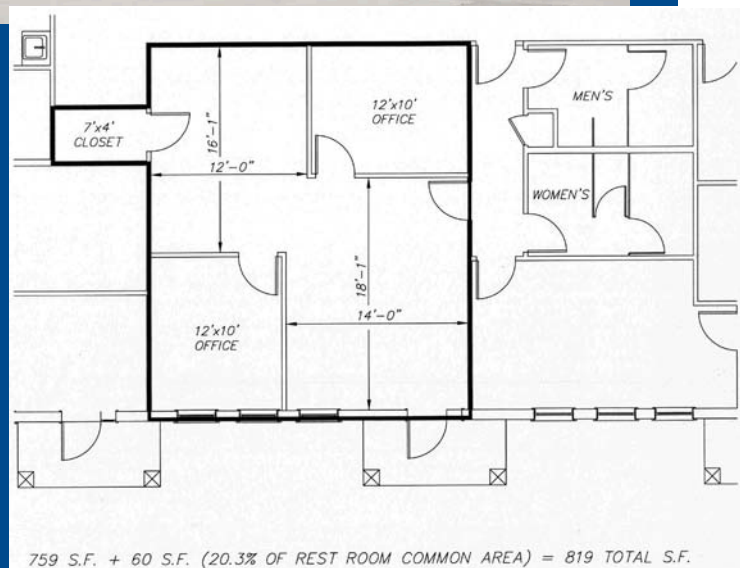
285 Southwest Pkwy



OFFICE SPACE FOR LEASE

The layout is excellent for any type of user.

Highway 35E, 121 Bypass and FM 3040 are close for easy access anywhere in the metroplex.



- 819 S.F. (759 S.F. plus 60 S.F. Common share of men's and women's rest rooms)
- Conference room
- Reception area
- Private bathroom
- Two separate entrances.

285 Southwest Pkwy

Lewisville

WEAVER
COMMERCIAL REAL ESTATE

for more information contact:

Todd Weaver
2901 Corporate Circle
Flower Mound, TX 75028

todd@weavercommercial.com
469-635-2833 Office
469-635-2849 Fax